

# Azimuth Stern Drive Tug 2813

STANDARD



## » PICTURE OF SIMILAR VESSEL

### GENERAL

Basic functions	Towing, mooring, escorting and Ø fire-fighting operations
Classification	Bureau Veritas I ✱ HULL • MACH Escort Tug (Bollard pull = 85t) (maximum steering force = 75t, maximum braking force = 90t, maximum escort speed = 10 kn) Unrestricted Service AUT UMS INWATER SURVEY COMF-NOISE 3, COMF-VIB 3 Ø Fire Fighting 1 Ø Fire Fighting 1 with water spray Ø Clean Ship Ø Green Passport EU Ø Lloyd's Register [✱] 100 A1 Escort Tug (Bollard pull = 85t) [✱] LMC UMS IWS CAC 3 Epoxy paint system
Painting	

### DIMENSIONS

Length overall	27.59 m
Beam overall	12.93 m
Depth at sites	5.20 m
Draught aft	6.00 m
Displacement (98% consumables)	645 t
Gross tonnage	388 t

### TANK CAPACITIES

Fuel oil	102.6 m <sup>3</sup>
Fresh water	17.4 m <sup>3</sup>
Sewage	5.6 m <sup>3</sup>
Dirty oil	2.4 m <sup>3</sup>
lubrication oil	2.4 m <sup>3</sup>
Bilge water	4.7 m <sup>3</sup>
Ø Foam	8.7 m <sup>3</sup>
Ø Dispersant	4.6 m <sup>3</sup>
Ø Urea	3.0 m <sup>3</sup>

### PERFORMANCES

Bollard pull ahead	83.1 t
Bollard pull astern	78.1 t
Speed	13.0 kn

### PROPULSION SYSTEM

Main engines	2x Caterpillar 3516C TA HD/D
Total power	5050 bkW (6772 bhp) at 1800 rpm
Azimuth thrusters	Kongsberg Maritime US 255 P30/P35 FP
Propeller diameter	3000 mm
Forced ventilation	80.000 m <sup>3</sup> /h
Ø Exhaust emission	IMO Tier III certified

### AUXILIARY EQUIPMENT

Generator sets	2x Caterpillar C4.4 TA, 230/400 V, 107 kVA, 50 Hz
Ø Generator sets	2x Caterpillar C4.4 TA, 440 V, 123 kVA, 60 Hz
Bilge pump	Azcue CA-32/05 3.6 m <sup>3</sup> /h at 1.1 bar
General service pumps	2x Azcue CA-50/3A 20 m <sup>3</sup> /h at 2.35 bar
Fuel oil pump	Azcue CA40-1B 12 m <sup>3</sup> /h at 1.2 bar
Fuel oil purifiers	2x CJC PTU3 27/81 MZ-E2PWZ, 1920 l/h each
Ø Sewage treatment plant	Selmar Blue Sea 2500
Cooling system	Box cooling + anti-growth system
Hydraulic system	Double main engine driven pumps
Ø Oil pollution control	Dispersant pumpset with 2 spraybooms
Ø Fifi set	Main engine driven pump 1200 m <sup>3</sup> /h or 2400 m <sup>3</sup> /h Ø with water spray
Ø Fifi monitor	1x 1200 m <sup>3</sup> /h or 2x 1200 m <sup>3</sup> /h water/foam

### DECK LAY-OUT

Anchors	2x 430 kg Pool (High Holding Power)
Anchor winch	Electrically driven anchor winch with warping head
Ø Second anchor winch	Electrically driven anchor winch
Towing winch fore	Hydraulically driven two speed double drum, low speed pull 27 ton up to 31 m/min, high speed pull 27 ton up to 49 m/min, brake 200 ton
Ø Rendering/recovery winch	Pull/low speed 30 ton up to 27 m/min on 2 <sup>nd</sup> layer, pull/high speed 30 ton up to 44 m/min on 2 <sup>nd</sup> layer, rendering 112 ton up to 82 m/min on 2 <sup>nd</sup> layer, brake 200 ton
Ø Towing winch aft	Hydraulically driven two speed winch with spooling device, pull 31 ton up to 12 m/min, slack rope speed up to 39 m/min, 200 ton brake
Ø Capstan	Electrically driven, 5 ton at 15 m/min or Ø 18 m/min
Ø Towing hook aft	SWL 100 ton
Ø Crane	Heila HLM 10-3S 0.8 ton at 10.36 m or Ø 20-3S + winch
Fendering	D-fender at sides, cylindrical fender at transom corners, cylindrical and W-block bow fender with water spray

### ACCOMMODATION

For max. 10 persons (MLC 2006 compliant), insulated and finished with durable modern linings, acoustical ceiling in the wheelhouse, floating floors and air-conditioned. Captain's cabin, chief engineer's cabin, 4 double crew cabins, galley, mess/dayroom, dry store, ships office and sanitary facilities.

### NAUTICAL AND COMMUNICATION EQUIPMENT

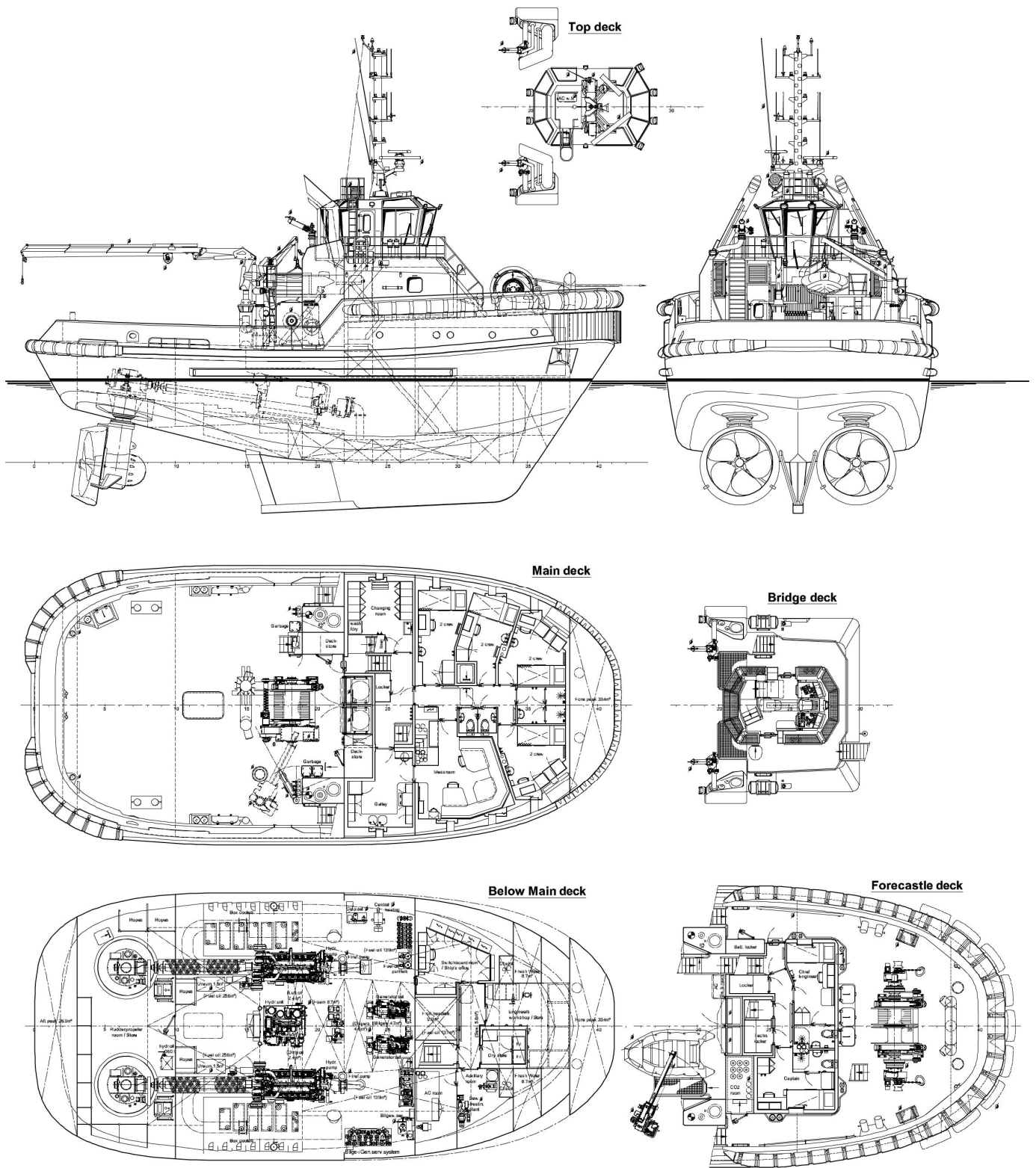
Searchlight(s)	1x Norselight 2000 W + Ø 1x Norselight 2000 W
Radar system(s)	1x Furuno FAR 1518-BB + Ø 1x Furuno FAR 1518-BB
Compass	Cassens & Plath Reflecta 11
Satellite compass/GPS	Simrad GN70/HS80A
Autopilot	Simrad AP-70
Echosounder	Furuno FE-800
Speed log	Furuno DS-80
VHF radio telephone	2x Cobham Sailor 6222 (one with DSC) + Ø 1x Cobham Sailor 6215
Navtex	Furuno NX-700B
Ø SSB	Furuno FS-1575
Ø LRIT	Furuno Felcom 19
Ø Inmarsat	2x Furuno Felcom 18
AIS	Furuno FA-170
EPIRB	Jotron Tron-60S
SART	Jotron Tronsart20
Remote monitoring	Ready for Damen Triton
Anemometer	Gill Instruments GMX 500

Ø = Optional equipment

**DAMEN**

# Azimuth Stern Drive Tug 2813

STANDARD



**DAMEN**

Damen.com

© No part of the leaflet may be reproduced in any form, by print, photoprint, microfilm, or any other means, without written permission from Damen Shipyards Group